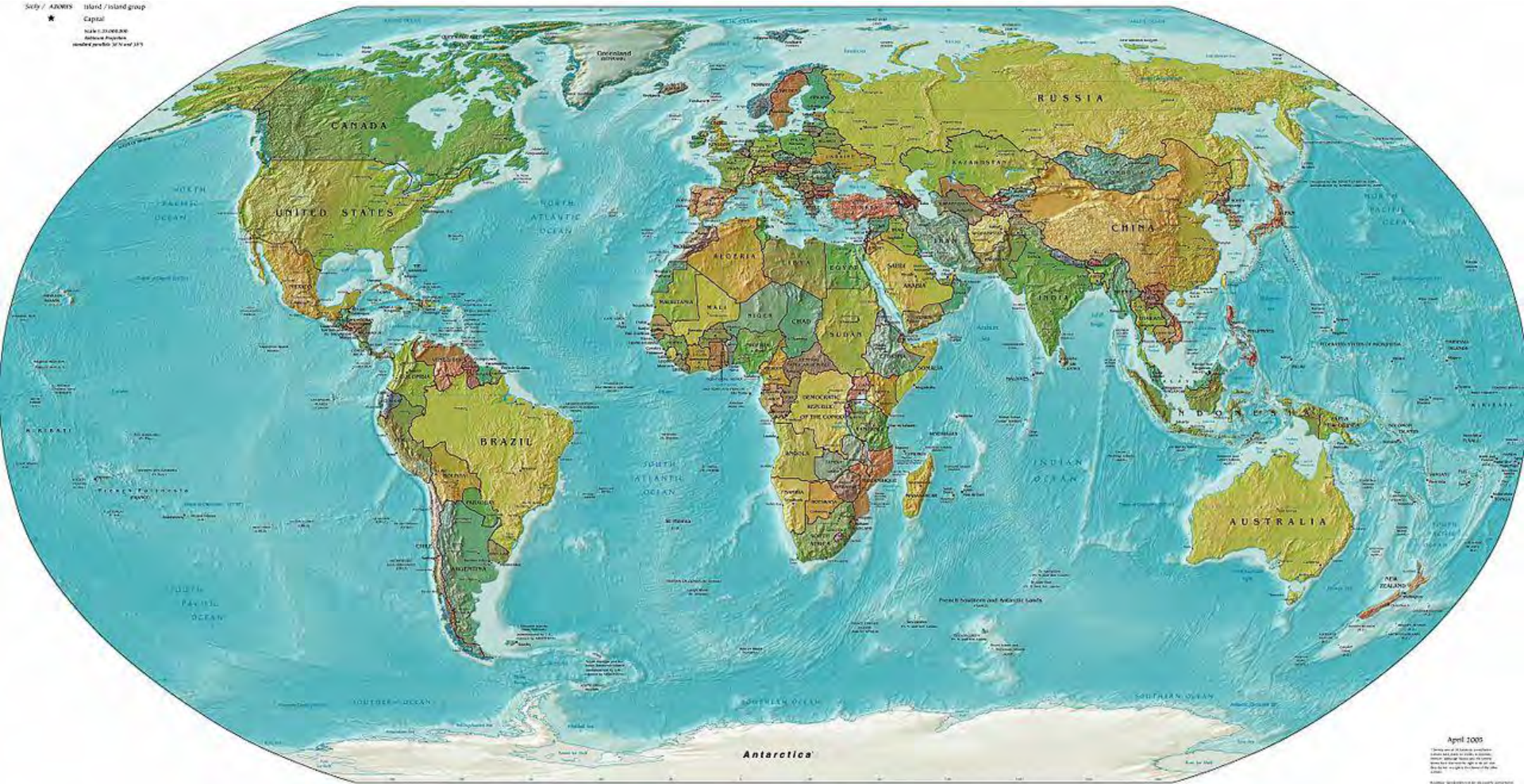


Plastikmüll im Meer



Bild: Ferdi Rizkiyanto

Setp / ADMINS Island / island group
 ★ Capital
 Main / secondary
 Relief / Political
 number, position of layer 315

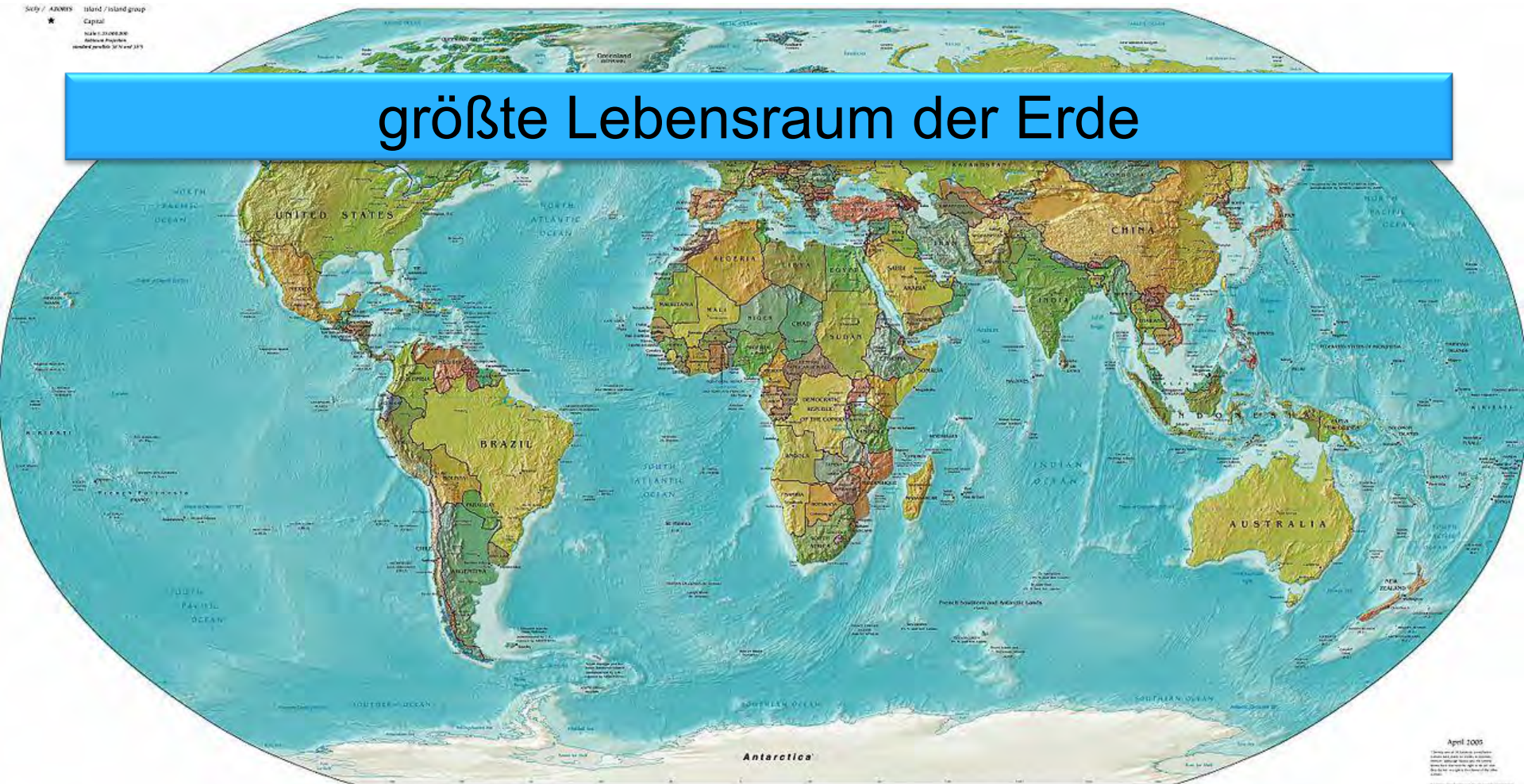


April 2005

This map is a political outline
 map and does not constitute
 any representation of the
 views of the publisher on the
 subject of territorial boundaries
 or political status.

Setz / ANMERK. Island / Island group
★ Capital
Scale 1:25000000
Reference Projection
Standard meridian 30° West 1875

größte Lebensraum der Erde

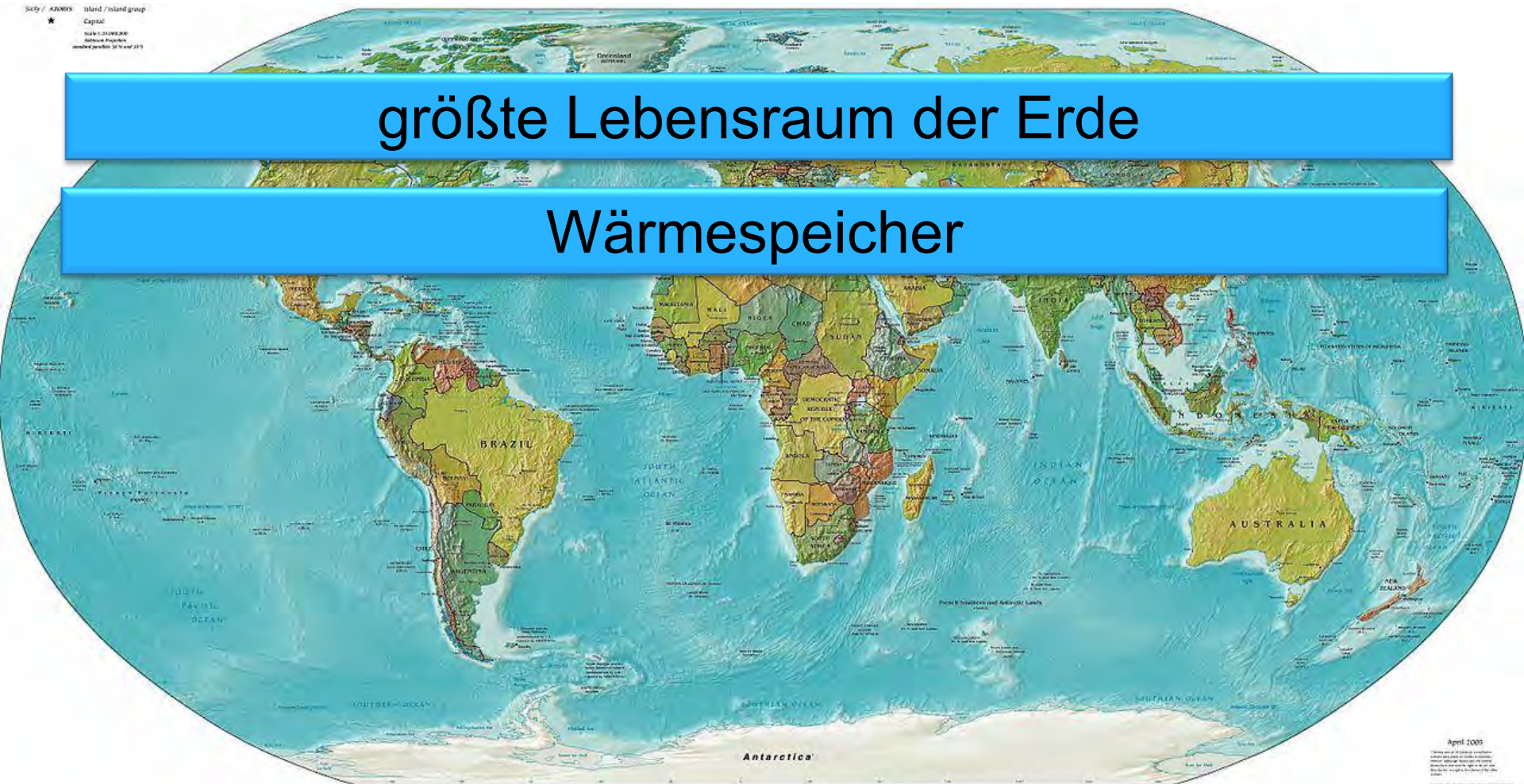


April 2005
© 2005 by National Geographic Society
All rights reserved. No part of this publication may be reproduced, stored in a retrieval system, or transmitted, in any form or by any means, electronic, mechanical, photocopying, recording, or by any information storage and retrieval system, without the prior written permission of National Geographic Society.

Setz / ANMERK. Island / Island group
★ Capital
Scale 1:25000000
Reference Projection
modified projection of UTM zone 31N

größte Lebensraum der Erde

Wärmespeicher



April 2005
© 2005 by the German Federal Government
All rights reserved. No part of this publication
may be reproduced, stored in a retrieval system,
or transmitted in any form or by any means
electronic, mechanical, photocopying, recording,
or by any information storage and retrieval system
without the written permission of the publisher.

Setz / ADMINIS Island / Island group
★ Capital
Scale 1:20,000,000
Reference Projection
Standard meridian 30° West 1875

größte Lebensraum der Erde

Wärmespeicher

Wärmetransport

April 2005

This map is a derivative product
of the National Geographic Society
and is not to be used for any other
purpose without the permission of
the National Geographic Society.

Setz / ADMINIS Island / Island group
★ Capital
Scale 1:25,000,000
Reference Projection
standard projection of WGS 1984

größte Lebensraum der Erde

Wärmespeicher

Wärmetransport

Wichtig für den globalen Wasserkreislauf

April 2005

This map is a derivative work based on the data provided by the National Geographic Society. It is not to be used for any purpose other than the one for which it was created. All rights reserved. © 2005 National Geographic Society.

Setp / ADMINIS Island /Island group
★ Capital
Scale 1:20000000
Reference Projection
Standard projection: WGS 1984

größte Lebensraum der Erde

Wärmespeicher

Wärmetransport

Wichtig für den globalen Wasserkreislauf

Kohlenstoffsенke

April 2005

This map is a derivative work based on the data provided by the German Federal Agency for Nature Conservation (BfN) and the German Federal Agency for Maritime Affairs (BfA). It is not to be used for commercial purposes without the permission of the German Federal Agency for Nature Conservation (BfN).

Setp / ADMINIS Island / Island group
★ Capital
Scale 1:25000000
Reference Projection
Standard projection: UTM Zone 31N

größte Lebensraum der Erde

Wärmespeicher

Wärmetransport

Wichtig für den globalen Wasserkreislauf

Kohlenstoffsенке

Wichtiger Wirtschaftssektor

Antarctica

April 2005

This map and all its contents are provided as a service to the public. It is not intended for navigation. The publisher is not responsible for any errors or omissions. The publisher is not liable for any damage or loss resulting from the use of this map.

Seely / ANSYS Island / island group
★ Capital
Scale: 1:20,000,000
Reference: Projections:
standard projection: WGS 1984

90 - 150 Millionen Tonnen Müll in den Meeren



April 2005
This map is a thematic visualization of plastic waste in the world's oceans. It is based on data from a global survey of plastic debris in the oceans, conducted by the International Coastal Cleanup (ICC) and the National Oceanic and Atmospheric Administration (NOAA). The data shows that plastic waste is most concentrated in the North Atlantic, the Mediterranean, and the Indian Ocean. The map is a thematic visualization of plastic waste in the world's oceans. It is based on data from a global survey of plastic debris in the oceans, conducted by the International Coastal Cleanup (ICC) and the National Oceanic and Atmospheric Administration (NOAA). The data shows that plastic waste is most concentrated in the North Atlantic, the Mediterranean, and the Indian Ocean.

Seely / ANNIS Island / island group
★ Capital
Scale: 1:200,000,000
Reference Projection:
WGS 1984 UTM zone 32 N (lat 33°)

90 - 150 Millionen Tonnen Müll in den Meeren

Nur ca. 1% des Meeressmülls wird an die Küsten
angespült

April 2005

This map is a technical illustration
and does not represent the views of
any organization. It is provided for
information only and should not be
used for any purpose other than that
for which it was prepared.

Sety / ANSYS Island / island group
★ Capital
Scale: 20000:1
Reference: Projections:
standard: pseudo: Mercator: 30° N and 30° S

90 - 150 Millionen Tonnen Müll in den Meeren

Nur ca. 1% des Meeressmülls wird an die Küsten
angespült

5 – 12 Millionen Tonnen kommen jedes Jahr dazu

April 2005
This map is a general reference map and should not be used for navigation. It is not a substitute for a nautical chart. It is not a substitute for a map of the area shown. It is not a substitute for a map of the area shown. It is not a substitute for a map of the area shown.

A world map in a pseudo-cylindrical projection, showing continents and oceans. The map is the background for the text. Four horizontal orange boxes with black text are overlaid on the map. The text discusses marine pollution statistics. The map includes labels for 'RUSSIA', 'UNITED STATES', and 'Antarctica'.

90 - 150 Millionen Tonnen Müll in den Meeren

Nur ca. 1% des Meeressmülls wird an die Küsten
angespült

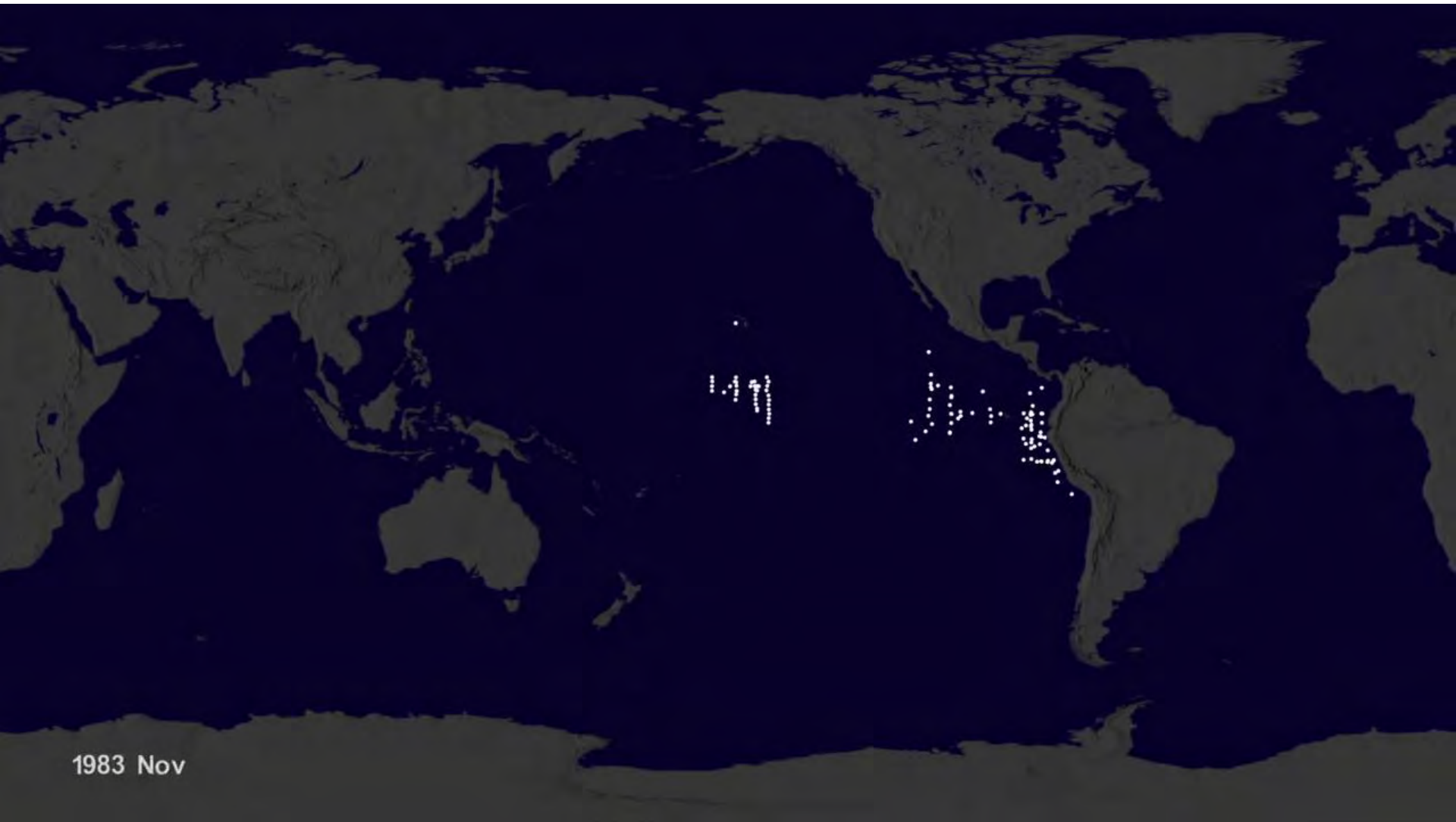
5 – 12 Millionen Tonnen kommen jedes Jahr dazu

Jedes Jahr verenden etwa 1.000 000 Seevögel
und

100.000 Meeressäuger an den Folgen von Plastik

April 2005

© 2005 by the National Geographic Society. All rights reserved. This map is a reproduction of the National Geographic Society's World Atlas, 7th Edition, 2001. It is not to be used for any other purpose without the permission of the National Geographic Society.



1983 Nov

Video: NASA

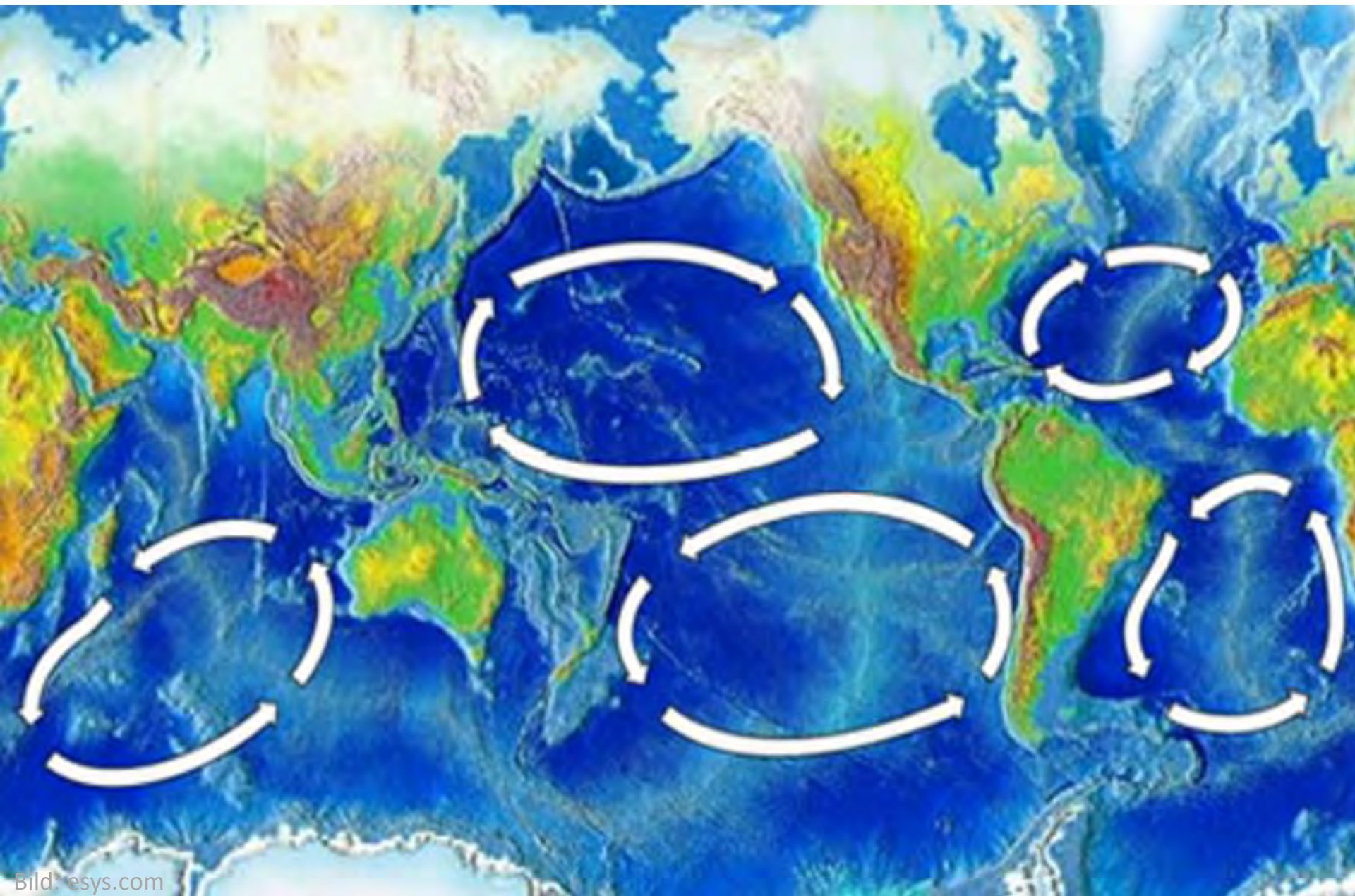


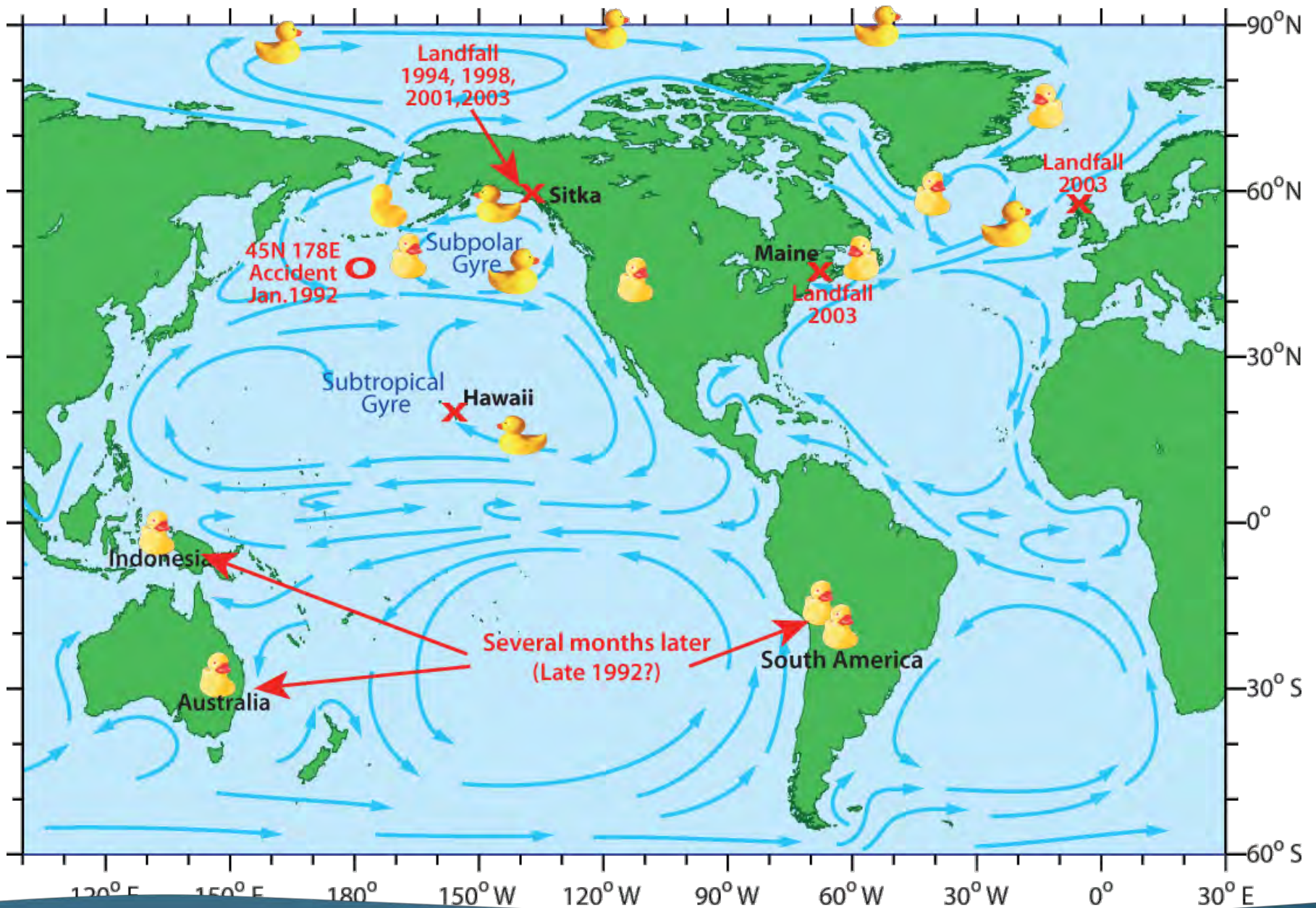
Bild: esys.com



The icebergs are reforming.
Great Pacific Garbage Patch



<http://imgur.com/gallery/ZNwFNuV>



So lange dauert der Abbau von Müll im Meer

2 Monate
Pappkartons



1 bis 3 Jahre
Sperrholz



1 bis 20 Jahre
Plastiktüten



50 Jahre
Weißblechdosen



200 Jahre
Aluminiumdosen



400 Jahre
Sixpack-Ringe



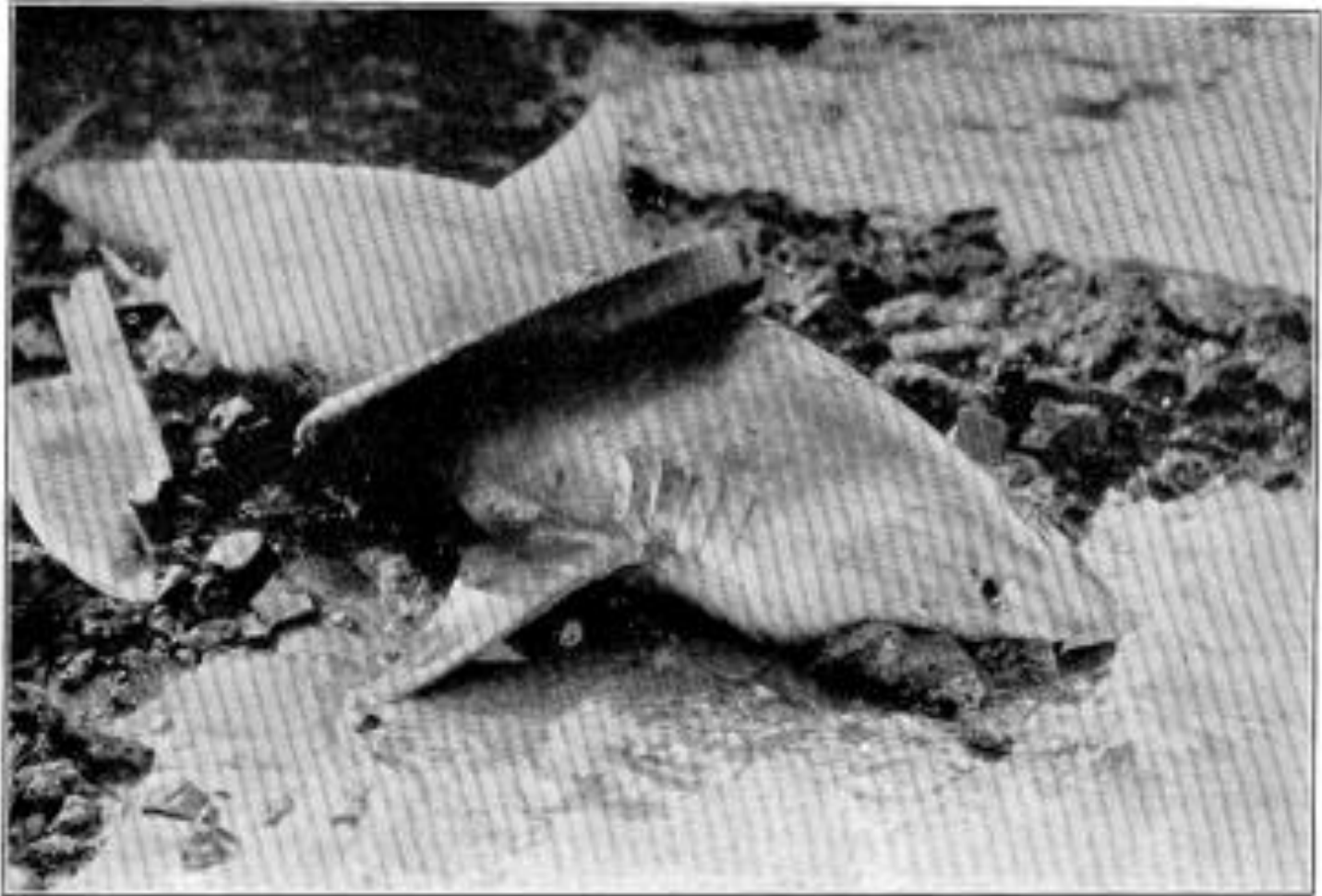
450 Jahre
Plastikflaschen



600 Jahre
Fischernetze



SZ-Graphik: Braun



—Photograph by courtesy of *Diario de la Marina, Habana.*
THE SHARK, ENCIRCLED BY A RUBBER AUTOMOBILE TIRE, ON THE SHORE OF COJIMAR BAY, EAST
OF HABANA HARBOR.



Bild: save our seas. ltd



Bild: ar.plasticgarbageproject.org



Bild: AFP/ EBD-CSIC



Foto: Chris Jordan

Video: Chris Jordan - midwayfilm



Bild: natur-lexikon.com



Handwritten scribble consisting of two overlapping loops.

BFP 2155

Bild: Jan Andries van Franeker



Bild: EDUCATION IMAGES, UIG/GETTY







Bild: © Die reale Welt.de



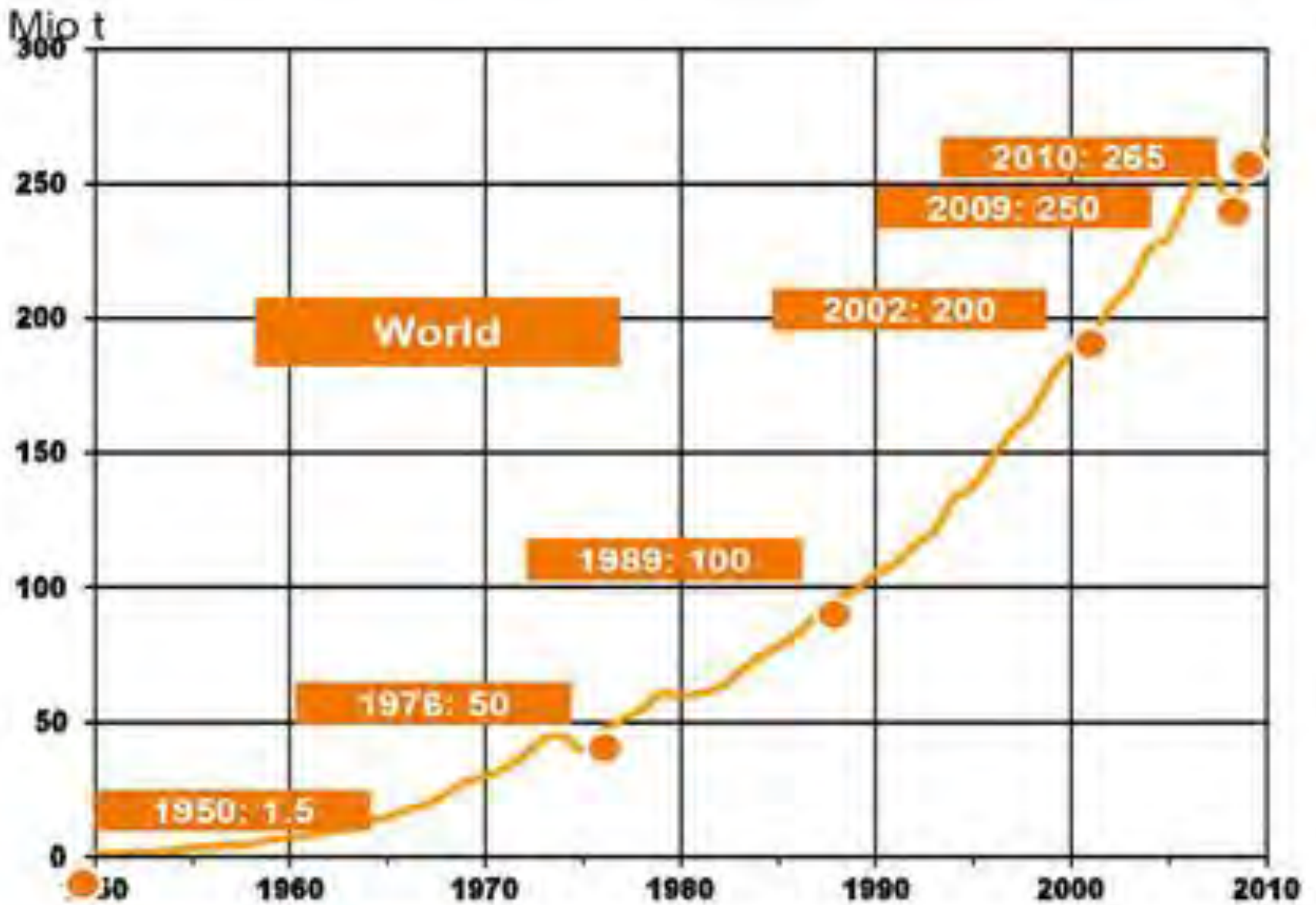
Bild: via KOMONEWS



Bild: Kathryn Berry



Bild: Kathryn Berry



Mio t

Im Jahr 2050:
3x soviel Plastik wie Fische im Meer



Mio t

Von insgesamt über 8 Milliarden Tonnen Plastik wurden nur 600 Millionen Tonnen Plastik recycled und 800 Millionen Tonnen verbrannt



Zwar wird in Deutschland 42% des Plastiks recycled, aber jeder Deutsche produziert im Jahr etwa 37kg Plastikmüll





MÜLLHALDE STRAND
In Urlaubsregionen ist der Tourismus für bis zu 40 Prozent des Mülls im Meer verantwortlich

Styropor-becher
Abbauzeit: 50 Jahre

Konserven-dose
Abbauzeit: 50 Jahre

Plastikflasche, Mikroplastik
geschätzte Abbauzeit: 450 Jahre

Angelschnur
Abbauzeit: 600 Jahre

SCHIFFFAHRT
Immer wieder entsorgen Schiffe auch ihren Plastikmüll im Meer. Dabei ist die Entsorgung von Plastik auf See weltweit verboten.



Plastik

Grafik: © jotfoto.de



An europäischen Stränden besteht die Hälfte des Plastikmülls aus Verpackungsmaterialien

Grafik: ©Spiegel.de

A close-up photograph of a human fingerprint on a light-colored, possibly white, surface. The fingerprint is the central focus, showing clear ridge patterns. A semi-transparent grey rectangular box with a slight gradient is overlaid horizontally across the middle of the image, containing the text 'Kein Mikroplastik in Kosmetik'.

Kein Mikroplastik in Kosmetik

Grafik: © utopia.de

Regelungen für ordnungsgemäße Abgabe von auf See anfallendem Plastikmüll



Bild © noaa.com



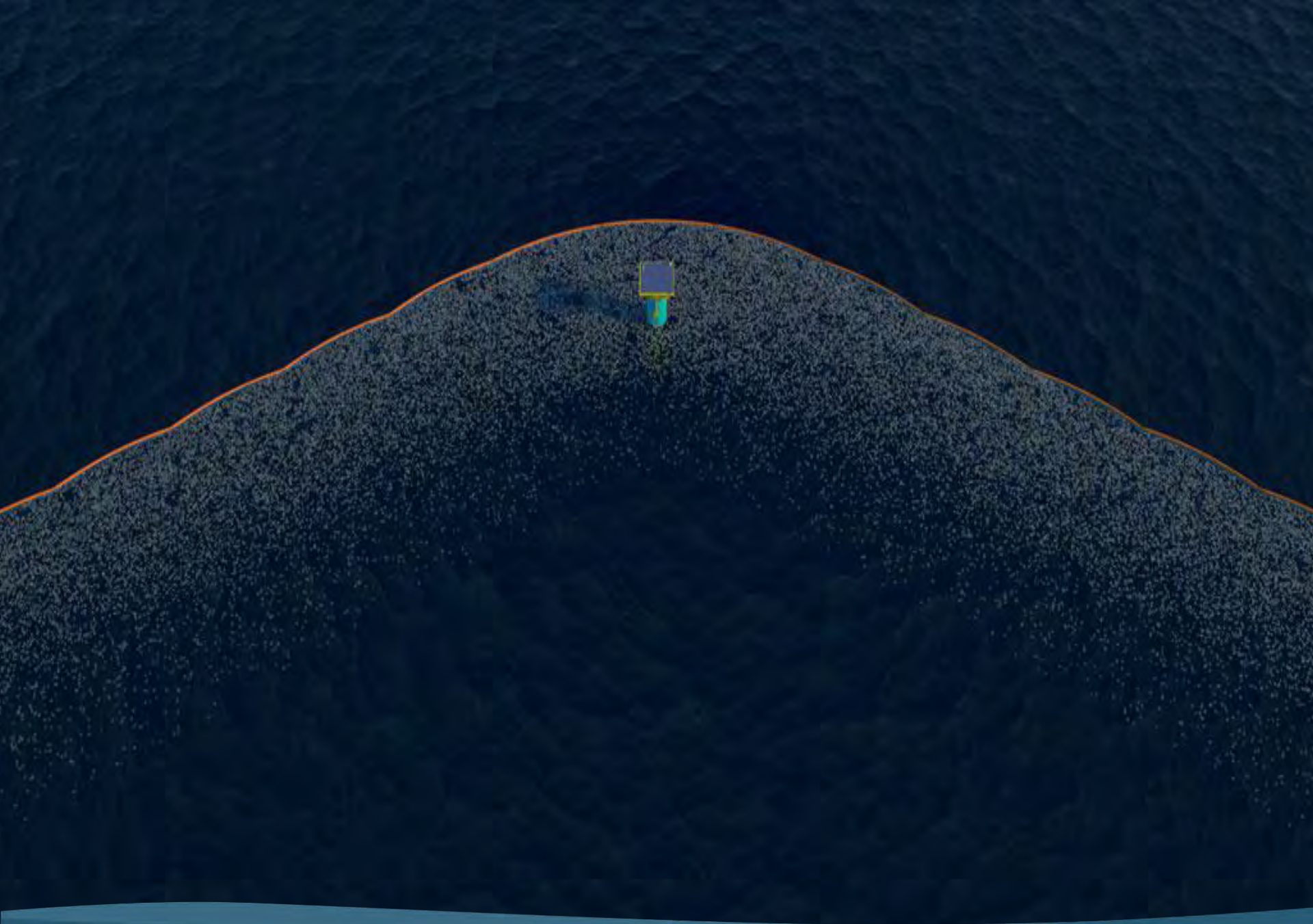
Foto: © NABU / Andrea Hentschel

Helfen Sie mit, die
Verteilung von Meeresmüll
zu erfassen!

Bitte melden Sie die Nummer
und den Fundort dieses
Drifters an die Universität
Oldenburg unter
www.macroplastics.de

034727



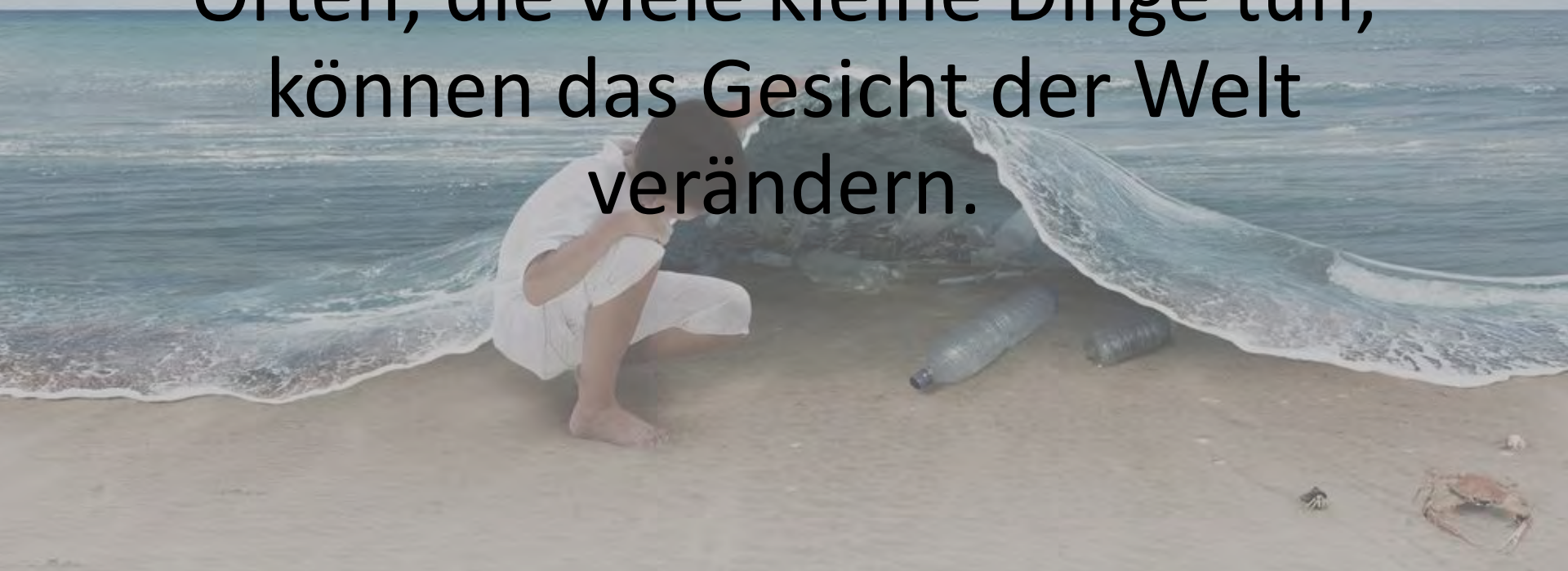


Refuse, Reduce, Reuse, Recycle & Rethink

- Besonders kritische Produkte verbieten
- Plastik vermeiden
- Mehrweg statt Einweg
- Müll trennen
- Wolle statt Fleece
- Einfach mal aufräumen
- ...

Bild: Ferdi Rizkiyanto

Viele kleine Leute an vielen kleinen
Orten, die viele kleine Dinge tun,
können das Gesicht der Welt
verändern.



Text: afrikanisches Sprichwort

Bild: Ferdi Rizkiyanto

Danke für Ihre Aufmerksamkeit !



Bild: Ferdi Rizkiyanto